



Flat Iron

A contemporary rectangular hardware collection offering versatility. This smooth-gliding traverse system operates both ripplefold and pleated drapery styles. All necessary components to create ripplefold treatments are included in the collection. Baton or cord drawn options available. The sleek low profile drapery rods can be completed with endcaps or return to the wall. Poles are 1-1/2" square. Finishes: Lacquered Black (LBK) Lacquered Champagne (LCH) Lacquered Natural (LNA)



1-1/2" SQUARE TRAVERSE POLE
4' Length DFL20/LBK
8' Length DFL21/LBK



1-1/2" SQUARE TRAVERSE POLE
4' Length DFL20/LCH
8' Length DFL21/LCH



1-1/2" SQUARE TRAVERSE POLE
4' Length DFL20/LNA
8' Length DFL21/LNA



CORD DRAWN OPTION

To order, select traverse pole item #, then add corded item # below.

POLE OPTIONS

Pole lengths are cut to order.



STRAIGHT CUT DP900

CUSTOM BENDING OPTIONS

BOW
DP910DFL

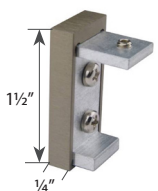


BAY
DP920DFL

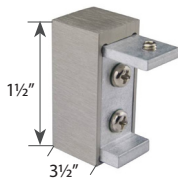


Poles are preassembled for:
Pleated drapes (one-way draw) DIN901KIT
Pleated drapes (center draw) DIN902KIT
Ripplefold drapes (one-way draw) DIN903KIT
Ripplefold drapes (center draw) DIN904KIT

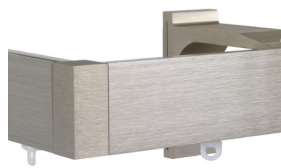
Standard cord drop length is 96." Custom lengths available. Please specify cord length and side of cord drop when ordering.



NARROW ENDCAP
DFL01



WIDE ENDCAP
DFL02



END RETURN
DFL03



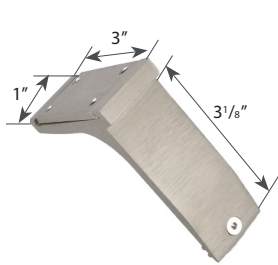
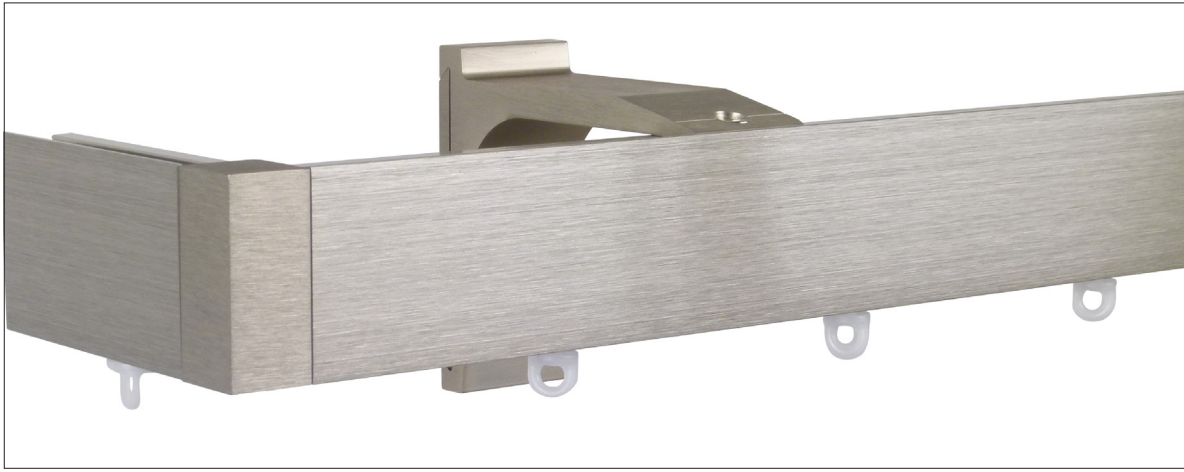
CORNER CONNECTOR
DFL45



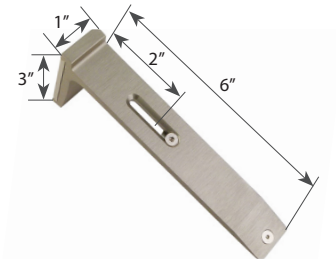
SPLICE CONNECTOR
DA925



SPLICE COVER
DFL110



SINGLE BRACKET
DFL40

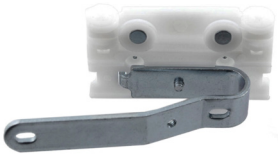


DOUBLE BRACKET
DFL41



CEILING BRACKET
DFL42

TRAVERSE COMPONENTS



OVERLAP CARRIER
DPA2013



UNDERLAP CARRIER
DPA2014

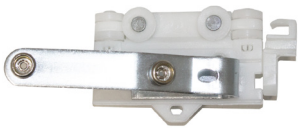


TRAVERSE GLIDE
DPA2250

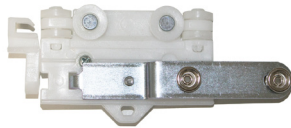


END STOP
DPA7540

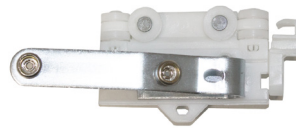
RIPPLEFOLD COMPONENTS



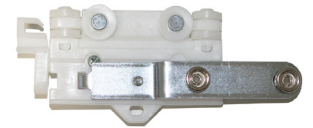
OVERLAP CARRIER
DPA2035



UNDERLAP CARRIER
DPA2036



BUTT MASTER (RIGHT)
DPA2045



BUTT MASTER (LEFT)
DPA2046



RIPPLEFOLD SNAP CARRIERS

2⁵/₁₆" on center for 60% fullness DPA2806/WH
2³/₁₆" on center for 80% fullness DPA2808/WH
2¹/₁₆" on center for 100% fullness DPA2810/WH
1¹/₁₆" on center for 120% fullness DPA2812/WH



RIPPLEFOLD SNAP TAPE DPA2945
Sold per yard. Snaps are 4¹/₄" on center.

RIPPLEFOLD SNAP TAPE DPA2946
Sold per 100 yard roll. Snaps are 4¹/₄" on center.



36" CLEAR ACRYLIC BATON DPA9036/ACR
48" CLEAR ACRYLIC BATON DPA9048/ACR