

Sea Coast

Bring a minimalist spirit to windows with Sea Coast Collection. It bridges organic beauty and shiny hard edges. The juxtaposition of natural textured wood poles and contrasting metal accessories creates supremely inviting window hardware. Idyllic in beachside homes or ski slope oases... and everything in between. This collection allows you to create versatile looks with either square drapery rings, or traverse glides for a ring-free aesthetic. Finish options include 3 warm woods + 5 modern metals. Square poles are 1-1/2" in diameter.

Finishes: Textured Natural (NAT)
 Textured Driftwood (DWD) Textured Brown (TBK)



NATURAL
 MINIMALISM



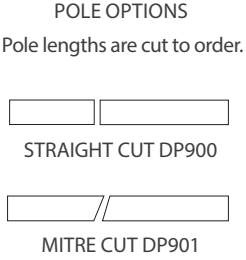
1 1/2" SQUARE WOOD POLE
 NATURAL (NAT)
 2" Length DCU23
 4' Length DCU24
 8' Length DCU25



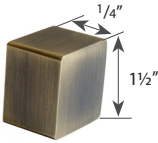
1 1/2" SQUARE WOOD POLE
 DRIFTWOOD (DWD)
 2" Length DCU23
 4' Length DCU24
 8' Length DCU25



1 1/2" SQUARE WOOD POLE
 BROWN (TBK)
 2" Length DCU23
 4' Length DCU24
 8' Length DCU25



Poles operable with drapery rings or traverse glides in collection.



ENDCAP
 BRUSHED GOLD
 DCU01/BGO



ENDCAP
 BRUSHED NICKEL
 DCU01/BNK



ENDCAP
 ONYX
 DCU01/ONX



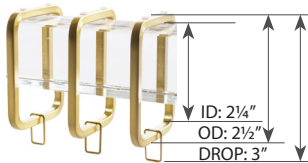
ENDCAP
 POLISHED NICKEL
 DCU01/PNK



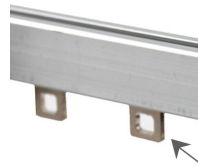
ENDCAP
 SATIN GOLD
 DCU01/SGO



5 Metal Finishes



METAL RING
1/8" THICKNESS
DCU30



TRAVERSE GLIDE
FOR WOOD POLE
DMX35/STL

To calculate # of glides needed,
divide rod length by 4. Example:
(96" rod / 4 = 24 glides)



36" CLEAR ACRYLIC BATON DPA9036/ACR
48" CLEAR ACRYLIC BATON DPA9048/ACR

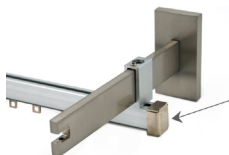
COMPONENTS TO CREATE A DOUBLE ROD SYSTEM.



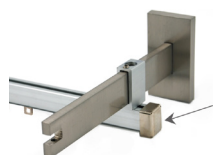
SECONDARY RAIL
4' Length DMX25/SNI
8' Length DMX26/SNI
Available in satin nickel only.



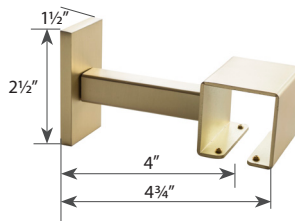
TRAVERSE GLIDE FOR
SECONDARY RAIL
DMX35/STL



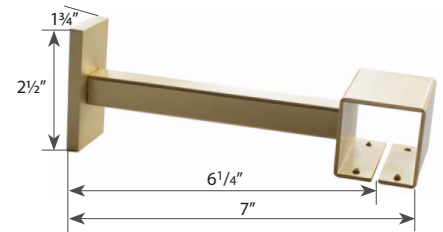
RAIL ENDCAP
DMX51/STL



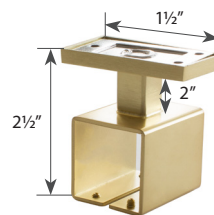
RAIL ADAPTER
DCU51/SNI



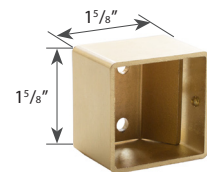
SINGLE BRACKET
DCU40



EXTENDED BRACKET
DCU41



CEILING BRACKET
DCU42



INSIDE MOUNT
DCU43