



WE'RE OPEN ABOUT OUR TRIMS



Photos: (top right) Cynthia McCullough Interiors

Our assorted open-braid trim styles have a backless design that allows fabrics to show through. A stunning embellishment on pillows, drapes and furniture. There's two ways to apply it. Here's how...

ADHESIVE METHOD

1. Apply Adhesive

Following the trim pattern, draw dots or fine lines of fabric adhesive on the backside. Choose an adhesive that dries clear.

It's important to use a dispenser with a small tip to ensure thin, precise glue placement, and avoid messy overflow.



2. Affix Trim

Carefully flip the trim over and apply it to the fabric, pressing down gently in sections.

Allow it to dry.

3. Install

It's easy as that!
Your drapery panel is ready to be installed.

Choose any of our open trim styles to embellish accent pillows, furniture, roman shades, cornices and lampshades.



1. Tack Stitches

In some instances, tack stitching is best. Apply tacking by hand or a sewing machine.

If using a machine, glue in a few spots or use pins to prevent the trim from shifting underneath the foot of the sewing machine.



2. It's Complete

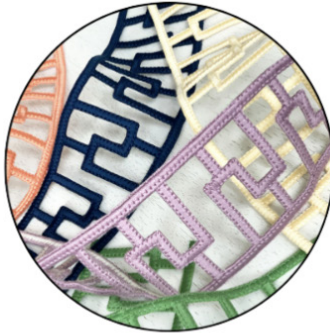
The trim is sturdily attached and your piece is ready to be enjoyed.



OPEN TRIM COLLECTIONS



Grecian Treasure
GREEK KEY COLLECTION



Modern Geometry
ARTSY COLLECTION



Timeless Fretwork
FRETIQUE COLLECTION



When laying out your next design project consider adding our stylish open trim to the mix.

Samples are complimentary and can be ordered online at BRIMARINC.COM

Or contact us at **847.247.0100**
brimar@brimarinc.com